

HyTtec® Trophy

Your mid-season TT champ

HyTtec® Trophy is your top pick for early-mid maturing hybrid TT Canola from Nuseed, the TT specialists.

If you're looking for a proven performer, **HyTtec Trophy** has form in the field.

HyTtec Trophy is an early-mid maturing canola which has shown exceptional yield performance against both current hybrid and open-pollinated TT varieties. HyTtec Trophy was among the highest yielding in early-mid season triazine tolerant trials and continues to perform strongly in National Variety Trials across Australia.

HyTtec Trophy combines hybrid seed traits such as strong early vigour, a strengthened disease resistance package, superior yield performance and the value of the Triazine Tolerant herbicide system.

HyTtec Trophy gives you confidence when choosing a new breed of hybrid TT canola.

An EPR (End Point Royalty) of \$10 per tonne (ex GST) applies to **HyTtec Trophy**.

Key Points

- Top of the table **yield performance** for superior returns
- Strong **early vigour** driving better establishment and resilience
- **Highly adaptable** to a range of growing environments
- **Strong blackleg resistance** of R for extra security
- Available under an **End Point Royalty** to reduce your upfront cost

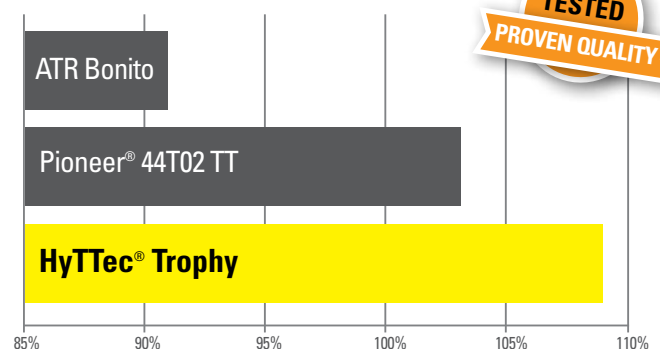


Description

| | |
|---------------------------|--|
| Development Code | NCH15T085 |
| Bag size | 20kg |
| Maturity | Early-Mid |
| Type | F1 Hybrid |
| Blackleg rating | R* |
| Blackleg group | ABDF |
| Height | Medium - Tall |
| Alternate to | ATR Bonito, Pioneer® 44T02TT, InVigor® T4510, Hyola® 559TT |
| Recommended growing areas | NSW, VIC, SA, WA |
| End Point Royalty | \$10 per tonne (ex GST) |

*2020 Blackleg rating bare.

Variety Performance



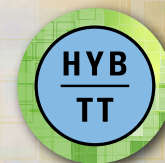
Yield % is an average of trial mean yield. 31 WA NVT trials with all varieties represented, with an average trial mean yield of 1.66MT/HA (2017- 2019). Information based on data available as at 14/03/2020.

Variety Comparison

| Variety | ATR Bonito | Pioneer® 44T02 TT | HyTtec® Trophy |
|-----------------------|------------|-------------------|----------------|
| Type | OP | Hybrid | Hybrid |
| Blackleg Rating* | MS | R | R |
| Oil Average (%) | 45.00 | 44.12 | 43.38 |
| Yield Average (MT/HA) | 1.51 | 1.72 | 1.80 |
| Yield % of Trial Mean | 91% | 103% | 109% |

31 WA NVT trials with all varieties represented, with an average trial mean yield of 1.66MT/HA (2017- 2019). Information based on data available as at 14/03/2020. For the most up-to-date NVT Data in your region please contact your local Nuseed representative today.



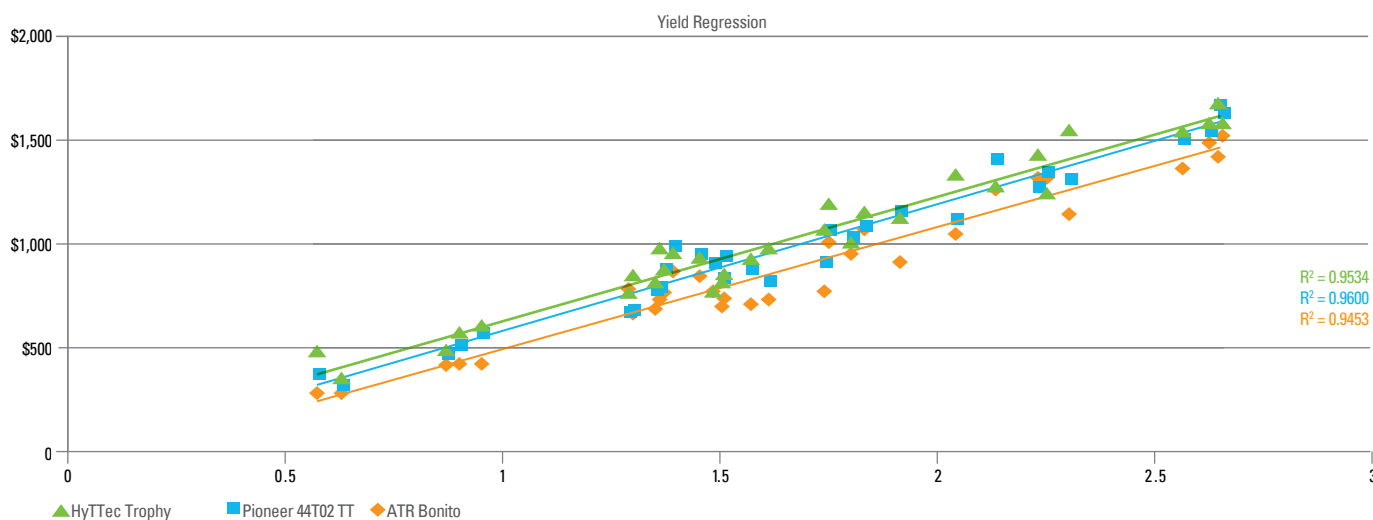


HyTtec® Trophy

Your mid-season TT champ

HyTtec Trophy NVT Regression Data

The following graph shows NVT yield results with **HyTtec® Trophy** outperforming **ATR Bonito** and **Pioneer® 44T02TT** across all yield environments.



31 WA NVT trials with all varieties represented, with an average trial mean yield of 1.66MT/HA (2017- 2019). Information based on data available as at 14/03/2020.

Seed treatments

| | |
|--------------|---|
| Cruiser Opti | A broad spectrum insecticidal seed treatment for early plant protection against aphids, red legged earth mite and lucerne flea. Contains 210g/L Thiamethoxam and 37.5g/L Lambda-Cyhalothrin. |
| Saltro Duo | A broad spectrum fungicidal seed treatment for the control of seedling blackleg and damping off diseases such as pythium and rhizoctonia in canola. Active constituents SALTRO: 200g/L Pydiflumetofen, Maxim XL: 25 g/L Fludioxonil & 10 g/L Metaxyl-M. |
| Poncho Plus | Insecticidal seed treatment for early protection of a broad number of insect pests in canola including wireworm, cutworm and lucerne flea plus red legged earth mite, blue oat mite and aphids. Contains 360 g/L Clothianidin and 240 g/L Imidacloprid. |
| Maxim XL | A broad spectrum fungicidal seed treatment for control of damping off diseases caused by pythium & rhizoctonia and suppression of seedling blackleg. Contains: 25g/L Fludioxonil & 10g/L Metaxyl-M. |

For more information, please contact:



Michael Hickey
Area Sales Manager
Northern WA
M 0438 913 106



Andrew Royce
Area Sales Manager
Southern WA
M 0427 466 916



Andrew Suverijn
Sales Manager
Customer Lead
M 0409 484 702

**General Enquiries and
Customer Service:**
1800 993 573

P: 1800 993 573
F: 1800 302 884
nuseed.com.au

Nuseed Pty Ltd
5 Ballinger Street
PO Box 377
Horsham Vic 3402

Nuseed is a registered trademark of Nufarm Australia Ltd. HyTtec is a registered trademark of Nuseed Pty Ltd. Roundup Ready is a registered trademark of Monsanto Technology LLC. Poncho is a registered trademark licensed by Bayer CropScience. Cruiser and Maxim XL are registered trademarks of Syngenta. Pioneer is a registered trademark of DuPont Pioneer. Hyola is a registered trademark of Pacific Seeds. All Nuseed canola varieties are protected under the Plant Breeders Rights Act 1994. COPYRIGHT All material appearing in this publication is copyright. All or part of this publication may not be reproduced in any way without the consent of Nuseed. DISCLAIMER: This publication is for information purposes only. Nuseed and its agents or employees shall not be liable for any loss or damage suffered by any person as a result of any reliance on any of the contents hereof, whether such loss or damage arises from the negligence or misrepresentation or any act or omission of Nuseed or its agents or employees.

Do you have a smartphone?

For further agronomic information and to check out Nuseed's **NuStep tool** for comprehensive NVT & trial results, scan this QR code or visit www.nuseed.com.au



nuseed.com.au
 @NuseedAustralia

Follow our Twitter and Facebook page to keep up to date with Nuseed