

HyTtec® Trophy

Your mid-season TT champ

HyTtec® Trophy is your top pick for early-mid maturing hybrid TT Canola from Nuseed, the TT specialists.

If you're looking for a proven performer, **HyTtec Trophy** has form in the field.

HyTtec Trophy is an early-mid maturing canola which has shown exceptional yield performance against both current hybrid and open-pollinated TT varieties. HyTtec Trophy was among the highest yielding in early-mid season triazine tolerant trials and continues to perform strongly in National Variety Trials across Australia.

HyTtec Trophy combines hybrid seed traits such as strong early vigour, a strengthened disease resistance package, superior yield performance and the value of the Triazine Tolerant herbicide system.

HyTtec Trophy gives you confidence when choosing a new breed of hybrid TT canola.

An EPR (End Point Royalty) of \$10 per tonne (ex GST) applies to **HyTtec Trophy**.

Key Points

- Top of the table **yield performance** for superior returns
- Strong **early vigour** driving better establishment and resilience
- **Highly adaptable** to a range of growing environments
- **Strong blackleg resistance** of R for extra security
- Available under an **End Point Royalty** to reduce your upfront cost

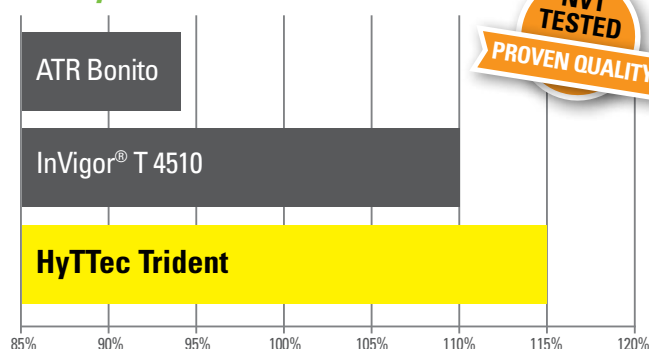


Description

Development Code	NCH15T085
Bag size	20kg
Maturity	Early-Mid
Type	F1 Hybrid
Blackleg rating	R*
Blackleg group	ABDF
Height	Medium - Tall
Alternate to	ATR Bonito, InVigor® T4510 Hyla® 559TT
Recommended growing areas	NSW, VIC, SA, WA
End Point Royalty	\$10 per tonne (ex GST)

*2020 Blackleg rating bare.

Variety Performance



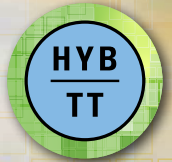
67 NSW, SA, VIC NVT & T3 trials with all varieties represented, with an average trial mean yield of 1.58 MT/HA (2017- 2019). Information based on data available as at 14/03/2020.

Variety Comparison

Variety	ATR Bonito	InVigor® T 4510	HyTtec Trophy
Type	OP	Hybrid	Hybrid
Blackleg Rating*	MS	MR	R
Oil Average (%)	43.51	40.60	41.33
Yield Average (MT/HA)	1.56	1.75	1.82
Yield % of Trial Mean	94%	110%	115%

67 NSW, SA, VIC NVT & T3 trials with all varieties represented, with an average trial mean yield of 1.58 MT/HA (2017- 2019). Information based on data available as at 14/03/2020. For the most up-to-date NVT Data in your region please contact your local Nuseed representative today.



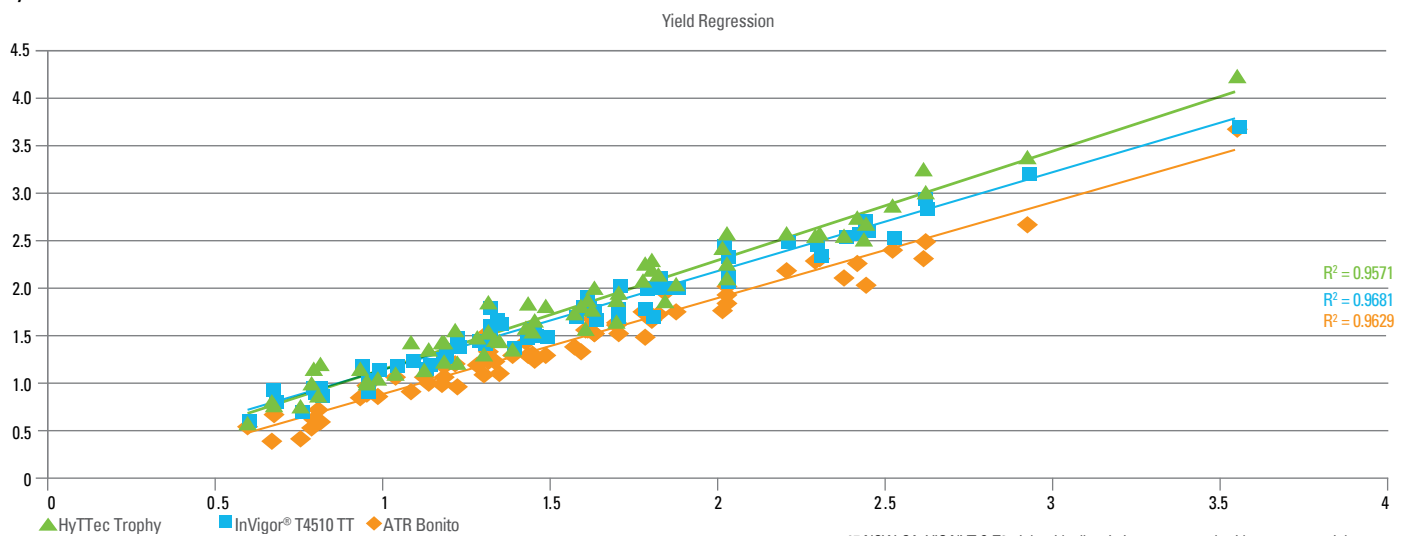


HyTtec® Trophy

Your mid-season TT champ

HyTtec Trophy NVT Regression Data

The following graph shows NVT yield results with **HyTtec® Trophy** outperforming **ATR Bonito** and **InVigor® T 4510** across all yield environments.



67 NSW, SA, VIC NVT & T3 trials with all varieties represented, with an average trial mean yield of 1.58 MT/HA (2017-2019). Information based on data available as at 14/03/2020.

Seed treatments

Cruiser Opti	A broad spectrum insecticidal seed treatment for early plant protection against aphids, red legged earth mite and lucerne flea. Contains 210g/L Thiamethoxam and 37.5g/L Lambda-Cyhalothrin.
Saltro Duo	A broad spectrum fungicidal seed treatment for the control of seedling blackleg and damping off diseases such as pythium and rhizoctonia in canola. Active constituents SALTRO: 200g/L Pydiflumetofen, Maxim XL: 25 g/L Fludioxonil & 10 g/L Metaxyl-M.
Poncho Plus	Insecticidal seed treatment for early protection of a broad number of insect pests in canola including wireworm, cutworm and lucerne flea plus red legged earth mite, blue oat mite and aphids. Contains 360 g/L Clothianidin and 240 g/L Imidacloprid.
Maxim XL	A broad spectrum fungicidal seed treatment for control of damping off diseases caused by pythium & rhizoctonia and suppression of seedling blackleg. Contains: 25g/L Fludioxonil & 10g/L Metaxyl-M.

For more information, please contact:



Adrian Carter
Area Sales Manager
VIC and SA
M 0409 756 127



Alan Wright
Area Sales Manager
Sthn NSW & Nthn VIC
M 0407 081 721



Brett Mawbey
Area Sales Manager
Central & Southern NSW
M 0428 638 918



Chris Roberts
Sales Manager
Technical Lead
M 0437 178 296

General Enquiries and Customer Service:

1800 993 573
P: 1800 993 573
F: 1800 302 884

nuseed.com.au

Nuseed Pty Ltd
5 Ballinger Street
PO Box 377
Horsham Vic 3402

Do you have a smartphone?

For further agronomic information and to check out Nuseed's **NuStep tool** for comprehensive NVT & trial results, scan this QR code or visit www.nuseed.com.au



Nuseed is a registered trademark of Nufarm Australia Ltd. HyTtec is a registered trademark of Nuseed Pty Ltd. Poncho is a registered trademark licensed by Bayer CropScience. Cruiser and Maxim XL are registered trademarks of Syngenta. Hyola is a registered trademark of Pacific Seeds. InVigor is a registered trademark of BASF Corporation. All Nuseed canola varieties are protected under the Plant Breeders Rights Act 1994. COPYRIGHT All material appearing in this publication is copyright. All or part of this publication may not be reproduced in any way without the consent of Nuseed. DISCLAIMER: This publication is for information purposes only. Nuseed and its agents or employees shall not be liable for any loss or damage suffered by any person as a result of any reliance on any of the contents hereof, whether such loss or damage arises from the negligence or misrepresentation or any act or omission of Nuseed or its agents or employees.

nuseed.com.au
 @NuseedAustralia

Follow our Twitter and Facebook page to keep up to date with Nuseed